



Features

1. AC230V 50/60Hz.
2. Lighting efficacy up to 120lm/W.
3. Famous brand 2835SMD light source.
4. PF>0.9, THD<15%.
6. Die-casting aluminum body.
- Anti-corrosion powder painting.
7. IP65 Waterproof for outdoor use.
8. 3 years warranty.
9. Export certificates are available.
10. Optional with sensor.



CAUTIONS:

1. Installation must be done by professional electricians.
2. Do NOT take apart the product. It may be dangerous.
3. Do NOT stare at the light with naked eyes. It is harmful to eyes.
4. For outdoor lighting, waterproof measurements must be done to the cable terminals.

WARRANTY:

1. All LED Street Lights are warranted by the manufacturer to be free of defects in material and workmanship for 3 years.
2. Warranty becomes void if the products is modified, improperly installed or used, damaged by accident or neglect, or if any parts are improperly installed or replaced by the user.
3. During the period of warranty time, if some products of us fails during normal circumstances and applications or have any defects above defined, we shall at our own choice replace or repair the defective products at no charge. And the liability claims would NOT exceed the value of the product itself.



PANORAMA LIGHTING CO.,LTD

Tel.: +86 760 23780690

E-mail: alyssa@panorama-led.com

WeChat: 18933373280

Http://www.panorama-led.com

Add.: No.282, ChangAn North Rd, Henglan, Zhongshan, Guangdong, P.R.China.

LED STREET LIGHT

SV SERIES
2021

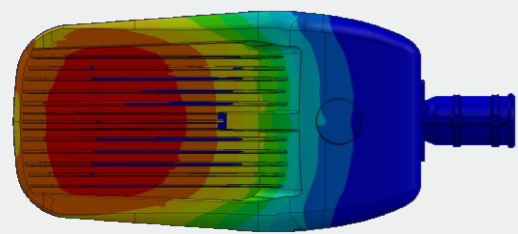


OVERVIEW

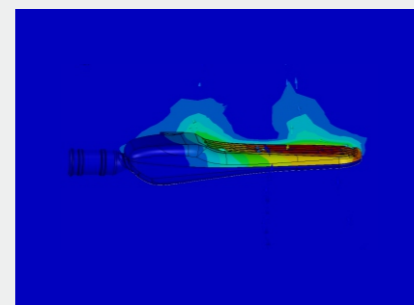


THERMAL MANAGEMENT

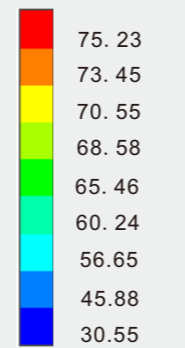
Structure is optimized by advanced FEA technology. Achieving longer lifespan at best cost-efficiency.



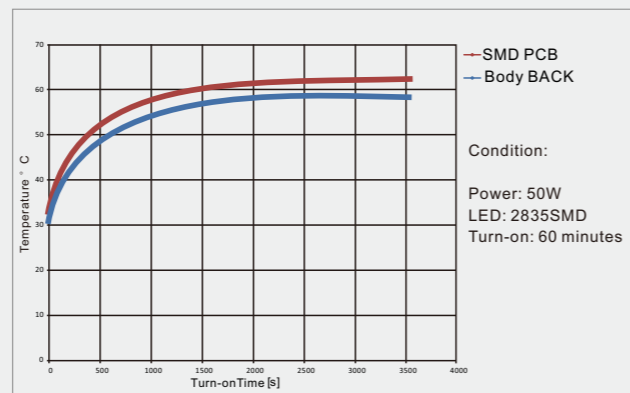
Thermal Air Convection(sectional view)



Thermal Air Flow(to environment)

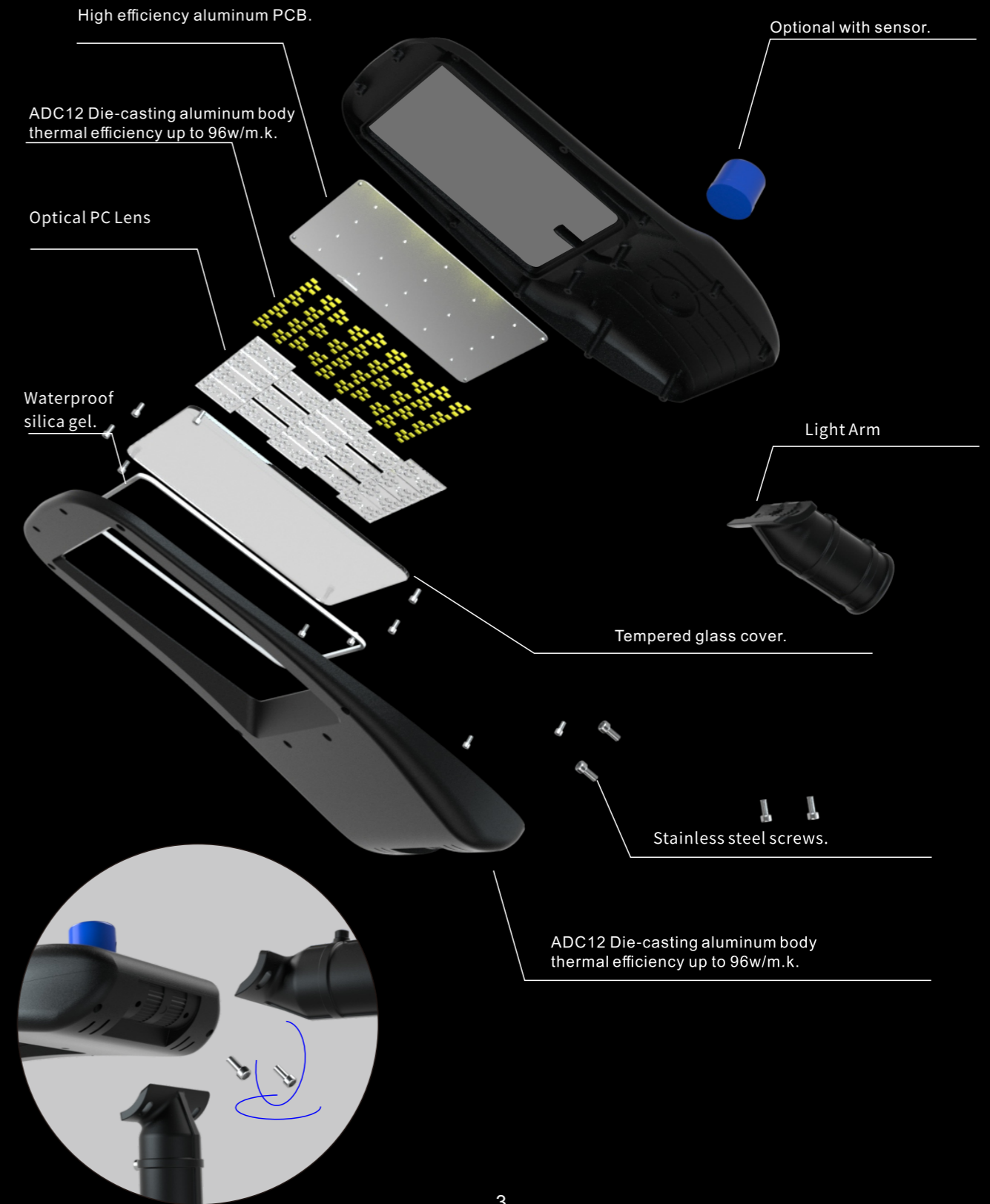


Unit: °C



Temperature Rise Curve

EXPLODED



APPLICATIONS

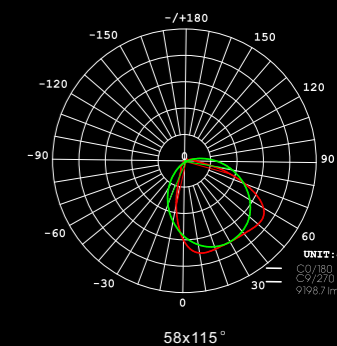
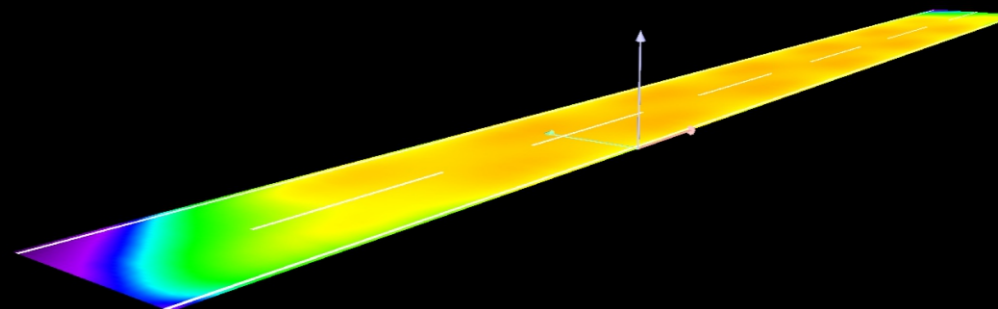
Widely Applicable

to outdoor roads, street lights, highways, gardens, squares and parks.



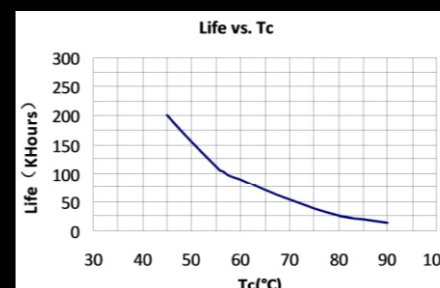
OPTICS

Tech. Support: Tell us the room length, width, height and the usage. We have an engineer team to respond the DIALUX simulations for lights quantity calculation and effects. .ies files are available upon request.



Lighting Distributions

ELECTRICAL



1 AC230V 50/60Hz.

2 PF > 0.95.

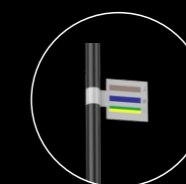
3 THD < 15%

4 Surge protection 10KV (SPD).

5 LED Driver IP65.

6 Efficiency > 92%, more energy-saving.

7 Start time 0.75S.



Brown: L
 Blue: N
 Yellow & Green: GND

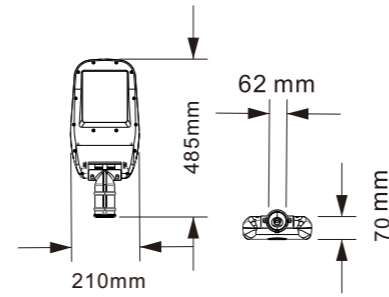
PARAMETRES



P-SV50W

LED Module: SV50
 LED Power: 50W ±5%
 Pole Size: Φ60mm
 Housing Size: 485*210*70mm
 Chip Type: SMD2835 Lamp
 Lumen Lux: 100-120LM/W
 Color Temp: 3000K /4000K /6500K
 RA: >80

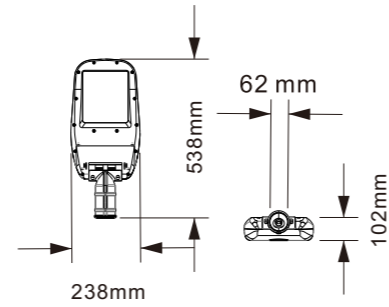
IP Grade: IP65
 SPD: >4KV
 Power Factor: >0.9
 Housing Color: Black / Gray / White
 Material: Aluminum+PC Lens
 Wire: 3x0.75mm²
 Warranty: 3 years
 1 ctn=1pc=51*22*11.5cm



P-SV100W

LED Module: SV100
 LED Power: 100W ±5%
 Pole Size: Φ60mm
 Housing Size: 538*238*102mm
 Chip Type: SMD2835 Lamp
 Lumen Lux: 100-120LM/W
 Color Temp: 3000K /4000K /6500K
 RA: >80

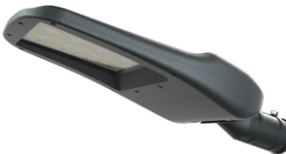
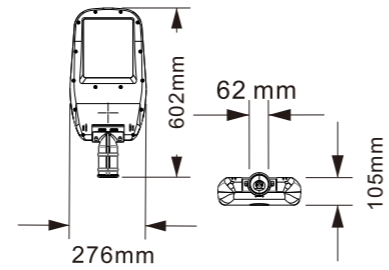
IP Grade: IP65
 SPD: >4KV
 Power Factor: >0.9
 Housing Color: Black / Gray / White
 Material: Aluminum+PC Lens
 Wire: 3x0.75mm²
 Warranty: 3 years
 1 ctn=1pc=55.5*24.5*11.5cm



P-SV150W

LED Module: SV150
 LED Power: 150W ±5%
 Pole Size: Φ60mm
 Housing Size: 602*276*105mm
 Chip Type: SMD2835 Lamp
 Lumen Lux: 100-120LM/W
 Color Temp: 3000K /4000K /6500K
 RA: >80

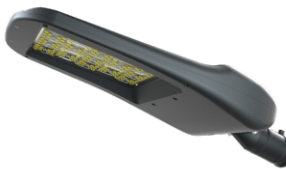
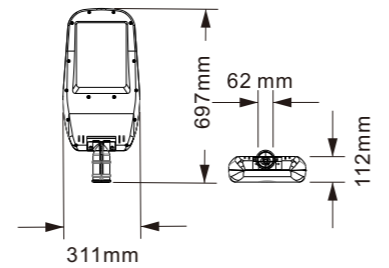
IP Grade: IP65
 SPD: >4KV
 Power Factor: >0.9
 Housing Color: Black / Gray / White
 Material: Aluminum+PC Lens
 Wire: 3x0.75mm²
 Warranty: 3 years
 1 ctn=1pc=63*28.5*11.5cm



P-SV200W

LED Module: SV200
 LED Power: 200W ±5%
 Pole Size: Φ60mm
 Housing Size: 697*311*112mm
 Chip Type: SMD2835 Lamp
 Lumen Lux: 100-120LM/W
 Color Temp: 3000K /4000K /6500K
 RA: >80

IP Grade: IP65
 SPD: >4KV
 Power Factor: >0.9
 Housing Color: Black / Gray / White
 Material: Aluminum+PC Lens
 Wire: 3x0.75mm²
 Warranty: 3 years
 1 ctn=1pc=71.5*32*13cm



INSTALLATION INSTRUCTIONS



Preparations

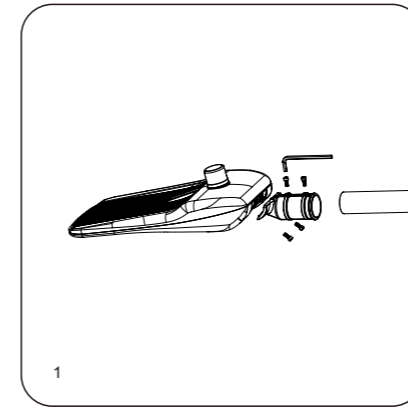


A. Finished-Horizontal Installation

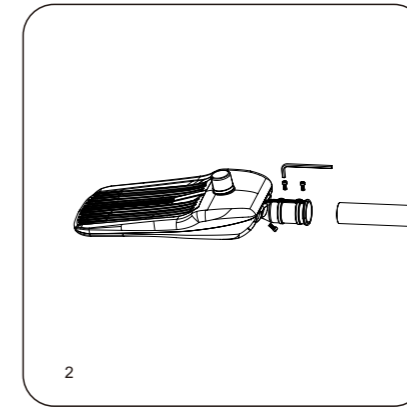


B. Finished-Vertical Installation

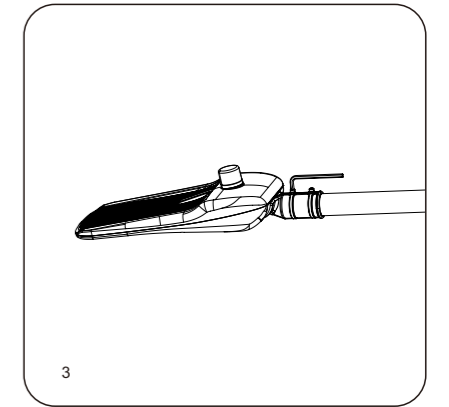
A: Steps for Horizontal Installation



1

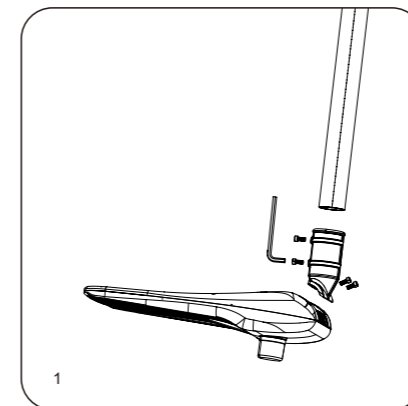


2

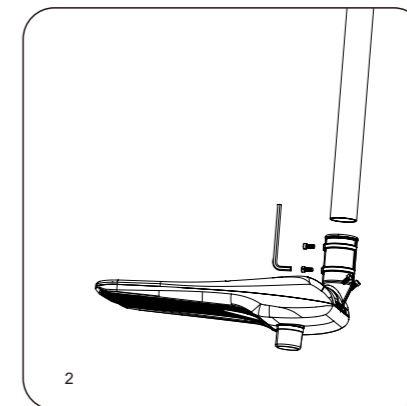


3

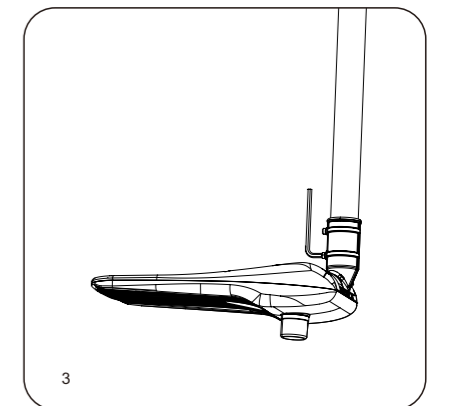
B: Steps for Vertical Installation



1



2



3