

Features

1. AC100~305V 50/60Hz.
2. Lighting efficacy up to 120lm/W.
3. Famous brand 2835SMD light source.
4. PF>0.9, Pass LVD & EMC.
6. Die-casting aluminum body.
- Anti-corrosion powder painting.
7. IP65 Waterproof for outdoor use.
8. 3 years warranty.
9. Export certificates are available.



CAUTIONS:

1. Installation must be done by professional electricians.
2. Do NOT take apart the product. It may be dangerous.
3. Do NOT stare at the light with naked eyes. It is harmful to eyes.
4. For outdoor lighting, waterproof measurements must be done to the cable terminals.

WARRANTY:

1. All LED Flood Lights are warranted by the manufacturer to be free of defects in material and workmanship for 3 years.
2. Warranty becomes void if the products is modified, improperly installed or used, damaged by accident or neglect, or if any parts are improperly installed or replaced by the user.
3. During the period of warranty time, if some products of us fails during normal circumstances and applications or have any defects above defined, we shall at our own choice replace or repair the defective products at no charge. And the liability claims would NOT exceed the value of the product itself.



PANORAMA LIGHTING CO.,LTD

E-mail: admin@panorama-led.com

Http://www.panorama-led.com

Add.:No.282,ChangAn North Rd,Henglan,

Zhongshan,Guangdong, P.R.China.



Jane

+86-18676275645



Alyssa

+86-13925326903



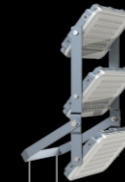
Lillian

+86-13169883399

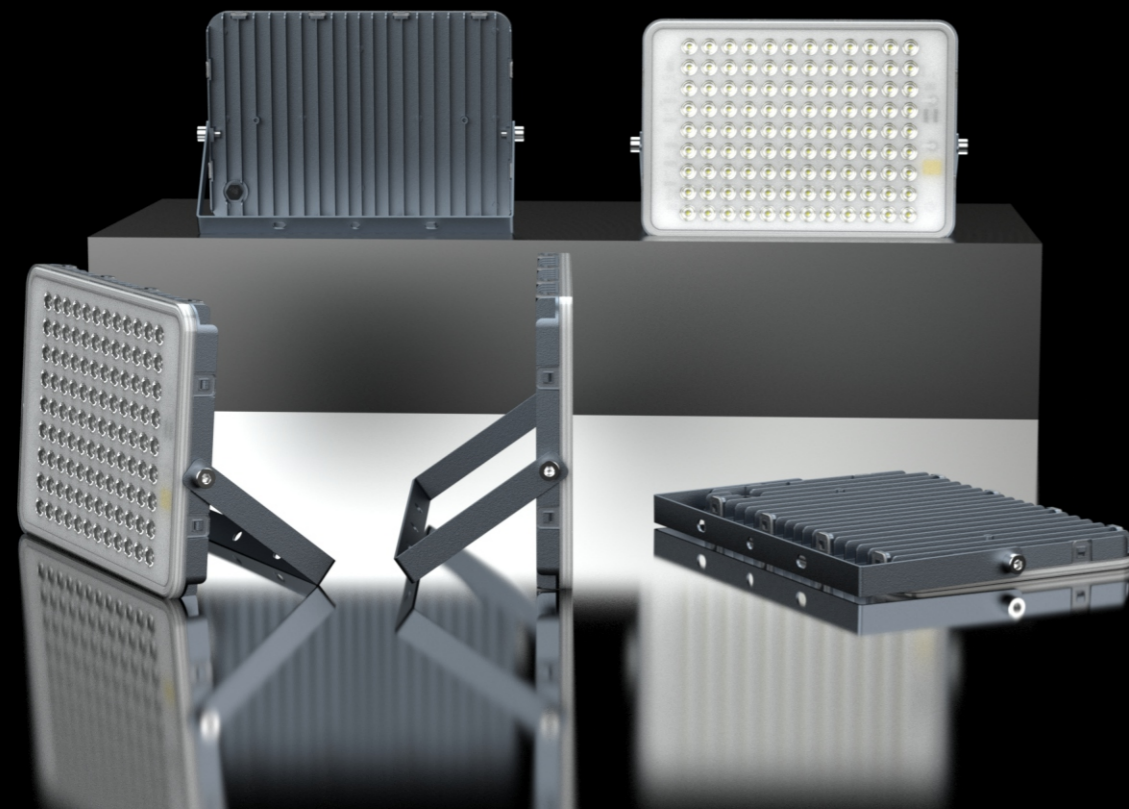
LED FLOOD LIGHT

FV SERIES

2020

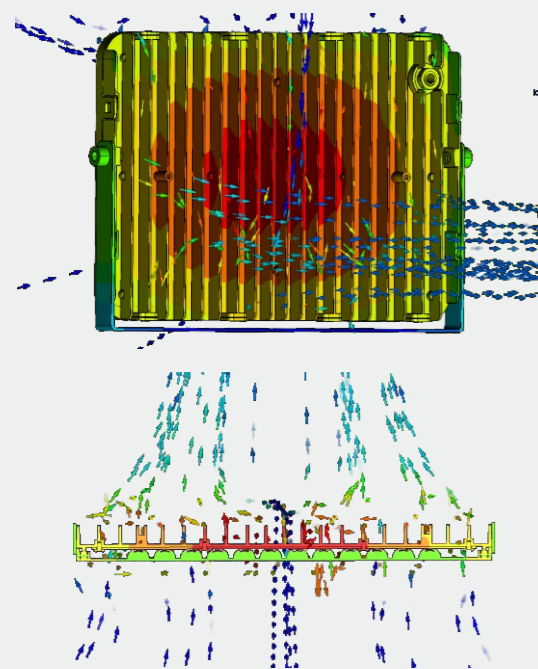


OVERVIEW

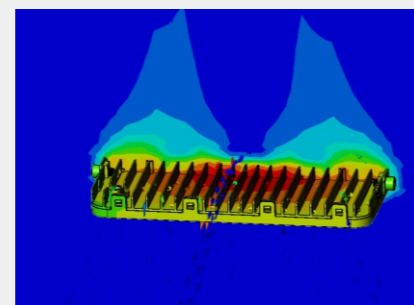


THERMAL MANAGEMENT

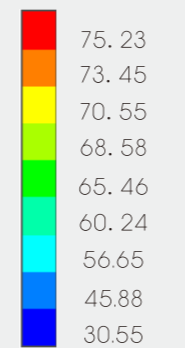
Structure is optimized by advanced FEA technology. Achieving longer lifespan at best cost-efficiency.



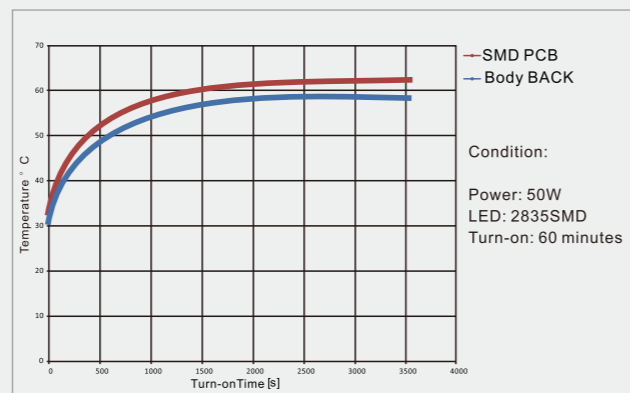
Thermal Air Convection(sectional view)



Thermal Air Flow(to environment)

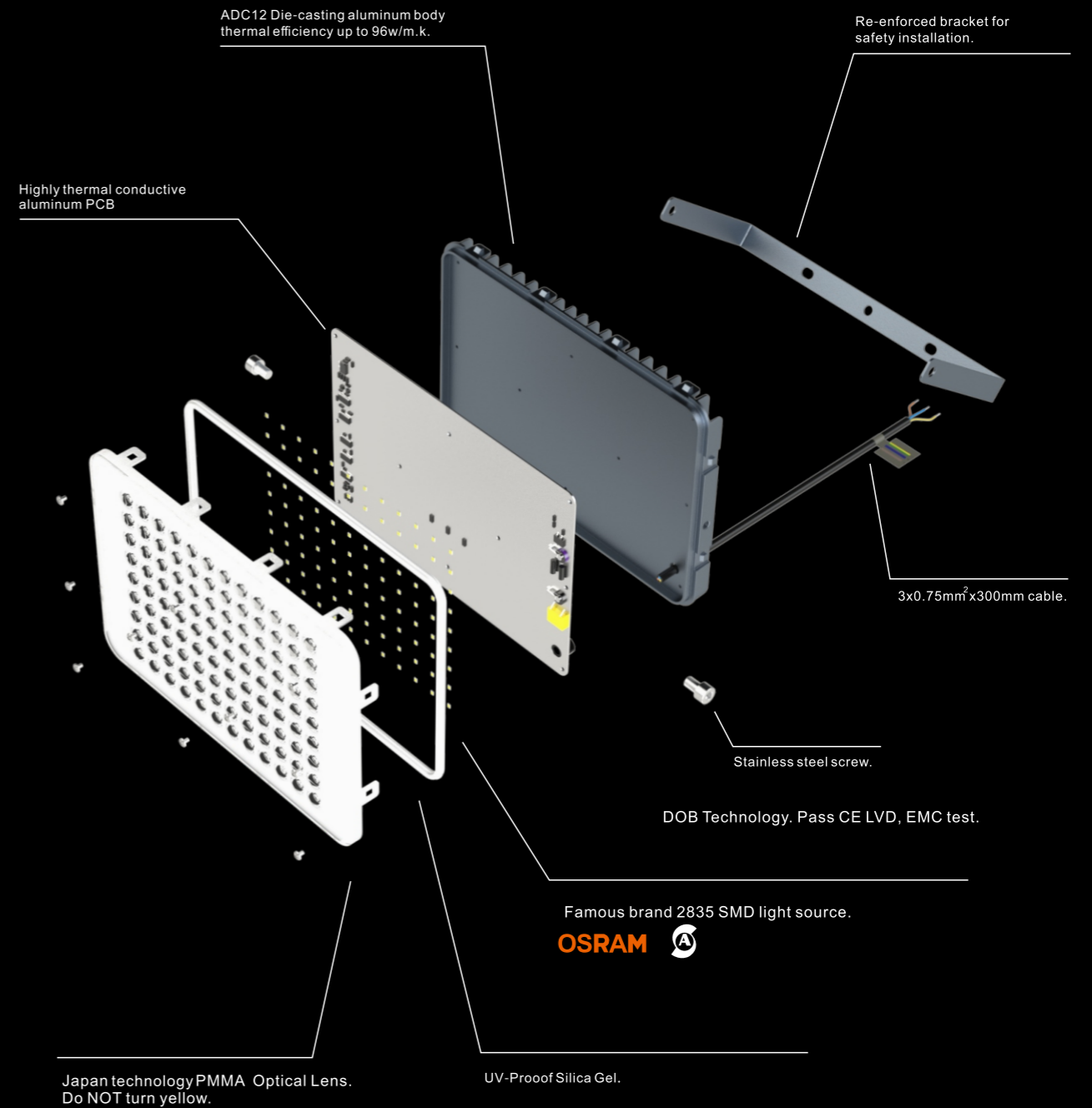


Unit: °C



Temperature Rise Curve

EXPLODED



APPLICATIONS

Widely Applicable

to indoor and outdoor locations. IP66 waterproof. Suitable for sports centers, bridges, billboards, villa, outdoor walls and park lighting. Installation methods available are on floor, on ceiling, on wall or on high mast.



Bridges



Billboards



Garden

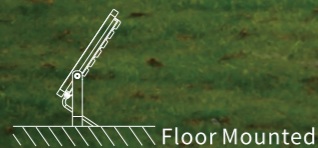


Park

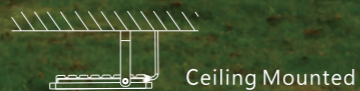
INSTALLATIONS



Wall Mounted



Floor Mounted



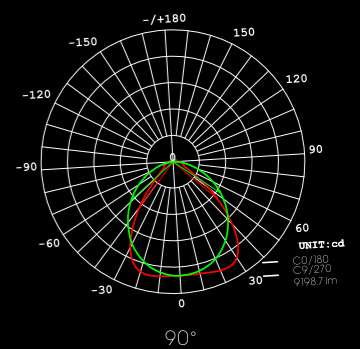
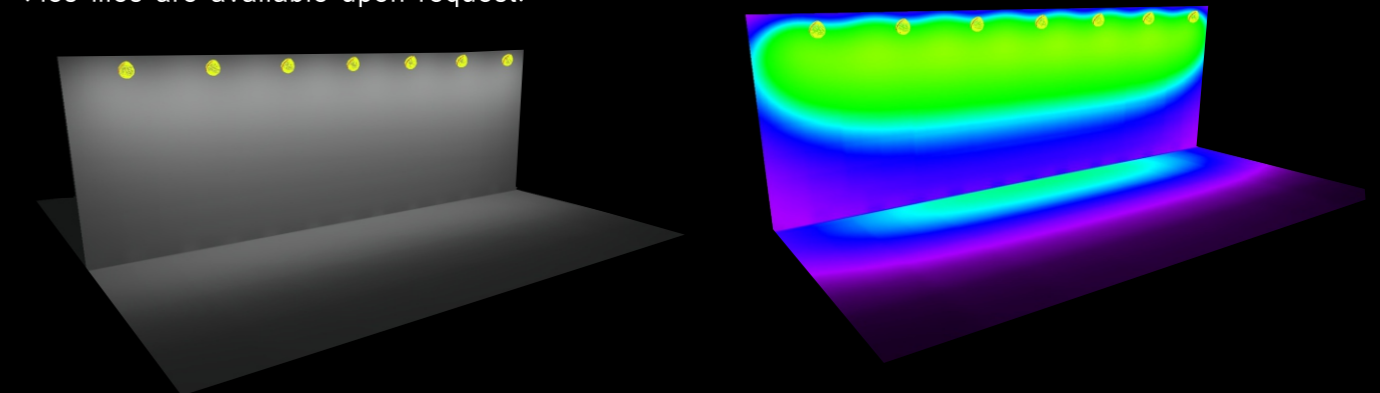
Ceiling Mounted



Pole Mounted

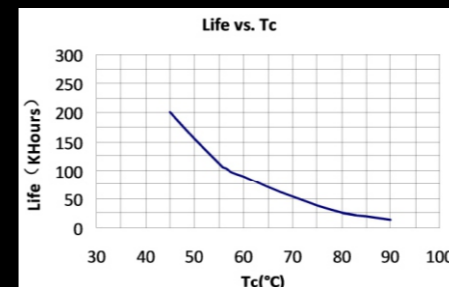
OPTICS

Tech. Support: Tell us the room length, width, height and the usage. We have an engineer team to respond the DIALUX simulations for lights quantity calculation and effects. .ies files are available upon request.



Lighting Distributions

ELECTRICAL



1 AC100~305V 50/60Hz.

2 PF > 0.95.

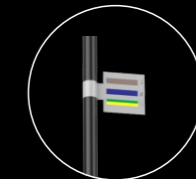
3 Pass LVD & EMC.

4 Surge protection 4~10KV (SPD).

5 LED Driver IP65.

6 Efficiency > 92%, more energy-saving.

7 Start time 0.75S.



Brown: L
Blue: N
Yellow & Green: GND

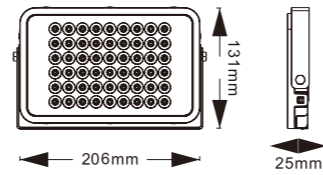
FLOOD LIGHT-50W MODULE



P-FV50-50W

LED Module: 54pcs/2835
 LED Power: 50W±5%
 Product Size: 206*131*25mm
 Efficacy: 100-120LM/W
 Power Factor: >0.9
 Voltage: AC100~305V 50/60Hz
 Beam Angle: 90°
 Color Temp: 3000K/4000K/6000K

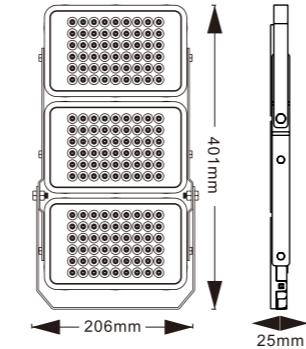
Color Rendering Index: Ra>75-85
 IP Grade/ IK Grade: IP65/Ik07
 Working Temp: -40°C~ +55°C
 Working Life-Span: 30,000H
 Connect Wire: Brown/Blue/Yellow
 Housing Color: Black / Grey / white
 LED Driver S1: DOB IC Solution
 LED Driver S2: Constant Current Solution



P-FV50-150W

LED Module: 162pcs/2835
 LED Power: 150W±5%
 Product Size: 206*401*25mm
 Efficacy: 100-120LM/W
 Power Factor: >0.9
 Voltage: AC100~305V 50/60Hz
 Beam Angle: 90°
 Color Temp: 3000K/4000K/6000K

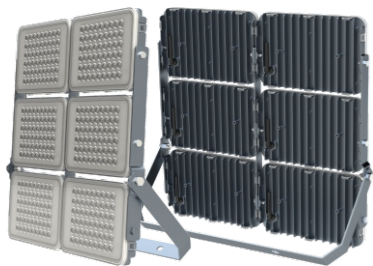
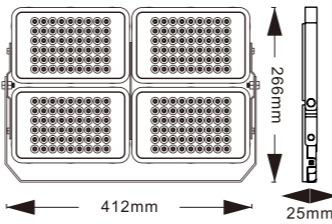
Color Rendering Index: Ra>75-85
 IP Grade/ IK Grade: IP65/Ik07
 Working Temp: -40°C~ +55°C
 Working Life-Span: 30,000H
 Connect Wire: Brown/Blue/Yellow
 Housing Color: Black / Grey / white
 LED Driver S1: DOB IC Solution
 LED Driver S2: Constant Current Solution



P-FV50-200W

LED Module: 216pcs/2835
 LED Power: 200W±5%
 Product Size: 412*266*25mm
 Efficacy: 100-120LM/W
 Power Factor: >0.9
 Voltage: AC100~305V 50/60Hz
 Beam Angle: 90°
 Color Temp: 3000K/4000K/6000K

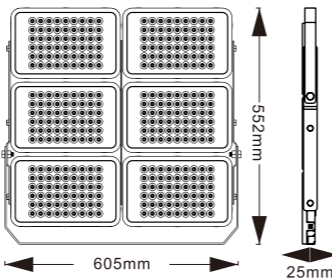
Color Rendering Index: Ra>75-85
 IP Grade/ IK Grade: IP65/Ik07
 Working Temp: -40°C~ +55°C
 Working Life-Span: 30,000H
 Connect Wire: Brown/Blue/Yellow
 Housing Color: Black / Grey / white
 LED Driver S1: DOB IC Solution
 LED Driver S2: Constant Current Solution



P-FV50-300W

LED Module: 324pcs/2835
 LED Power: 300W±5%
 Product Size: 605*552*25mm
 Efficacy: 100-120LM/W
 Power Factor: >0.9
 Voltage: AC100~305V 50/60Hz
 Beam Angle: 90°
 Color Temp: 3000K/4000K/6000K

Color Rendering Index: Ra>75-85
 IP Grade/ IK Grade: IP65/Ik07
 Working Temp: -40°C~ +55°C
 Working Life-Span: 30,000H
 Connect Wire: Brown/Blue/Yellow
 Housing Color: Black / Grey / white
 LED Driver S1: DOB IC Solution
 LED Driver S2: Constant Current Solution



PACKING

Item	Inner box size	Qty/box	Qty/carton	Carton size	Product Weight
P-FV50	23.5x14.5x3.2cm	1pcs	24pcs / 0.040m³	42*25*31cm	0.57kg
P-FV100	30x20.5x3.2cm	1pcs	12pcs / 0.036m³	42*31.5*22cm	1.1kg

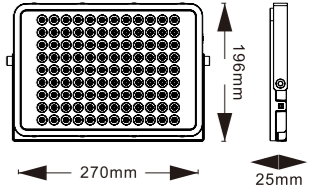
FLOOD LIGHT-100W MODULE



P-FV100-100W

LED Module: 108pcs/2835
 LED Power: 100W±5%
 Product Size: 270*196*25mm
 Efficacy: 100-120LM/W
 Power Factor: >0.9
 Voltage: AC100~305V 50/60Hz
 Beam Angle: 90°
 Color Temp: 3000K/4000K/6000K

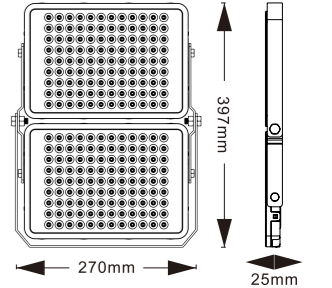
Color Rendering Index: Ra>75-85
 IP Grade/ IK Grade: IP65/Ik07
 Working Temp: -40°C~ +55°C
 Working Life-Span: 30,000H
 Connect Wire: Brown/Blue/Yellow
 Housing Color: Black / Grey / white
 LED Driver S1: DOB IC Solution
 LED Driver S2: Constant Current Solution



P-FV100-200W

LED Module: 216pcs/2835
 LED Power: 200W±5%
 Product Size: 270*397*25mm
 Efficacy: 100-120LM/W
 Power Factor: >0.9
 Voltage: AC100~305V 50/60Hz
 Beam Angle: 90°
 Color Temp: 3000K/4000K/6000K

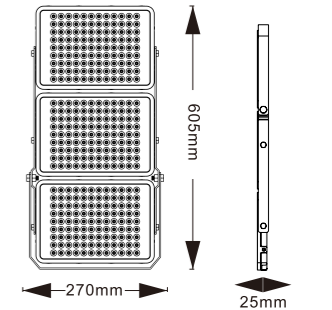
Color Rendering Index: Ra>75-85
 IP Grade/ IK Grade: IP65/Ik07
 Working Temp: -40°C~ +55°C
 Working Life-Span: 30,000H
 Connect Wire: Brown/Blue/Yellow
 Housing Color: Black / Grey / white
 LED Driver S1: DOB IC Solution
 LED Driver S2: Constant Current Solution



P-FV100-300W

LED Module: 324pcs/2835
 LED Power: 300W±5%
 Product Size: 270*605*25mm
 Efficacy: 100-120LM/W
 Power Factor: >0.9
 Voltage: AC100~305V 50/60Hz
 Beam Angle: 90°
 Color Temp: 3000K/4000K/6000K

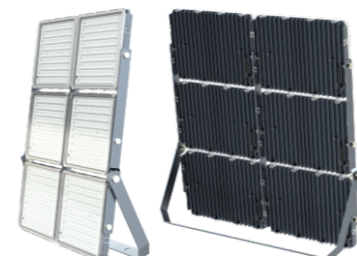
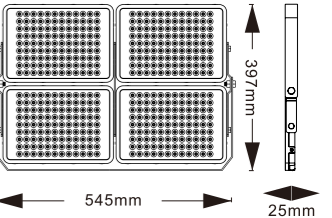
Color Rendering Index: Ra>75-85
 IP Grade/ IK Grade: IP65/Ik07
 Working Temp: -40°C~ +55°C
 Working Life-Span: 30,000H
 Connect Wire: Brown/Blue/Yellow
 Housing Color: Black / Grey / white
 LED Driver S1: DOB IC Solution
 LED Driver S2: Constant Current Solution



P-FV100-400W

LED Module: 108pcs/2835
 LED Power: 400W±5%
 Product Size: 545*397*25mm
 Efficacy: 100-120LM/W
 Power Factor: >0.9
 Voltage: AC100~305V 50/60Hz
 Beam Angle: 90°
 Color Temp: 3000K/4000K/6000K

Color Rendering Index: Ra>75-85
 IP Grade/ IK Grade: IP65/Ik07
 Working Temp: -40°C~ +55°C
 Working Life-Span: 30,000H
 Connect Wire: Brown/Blue/Yellow
 Housing Color: Black / Grey / white
 LED Driver S1: DOB IC Solution
 LED Driver S2: Constant Current Solution



P-FV100-600W

LED Module: 648pcs/2835
 LED Power: 600W±5%
 Product Size: 605*552*25mm
 Efficacy: 100-120LM/W
 Power Factor: >0.9
 Voltage: AC100~305V 50/60Hz
 Beam Angle: 90°
 Color Temp: 3000K/4000K/6000K

Color Rendering Index: Ra>75-85
 IP Grade/ IK Grade: IP65/Ik07
 Working Temp: -40°C~ +55°C
 Working Life-Span: 30,000H
 Connect Wire: Brown/Blue/Yellow
 Housing Color: Black / Grey / white
 LED Driver S1: DOB IC Solution
 LED Driver S2: Constant Current Solution

