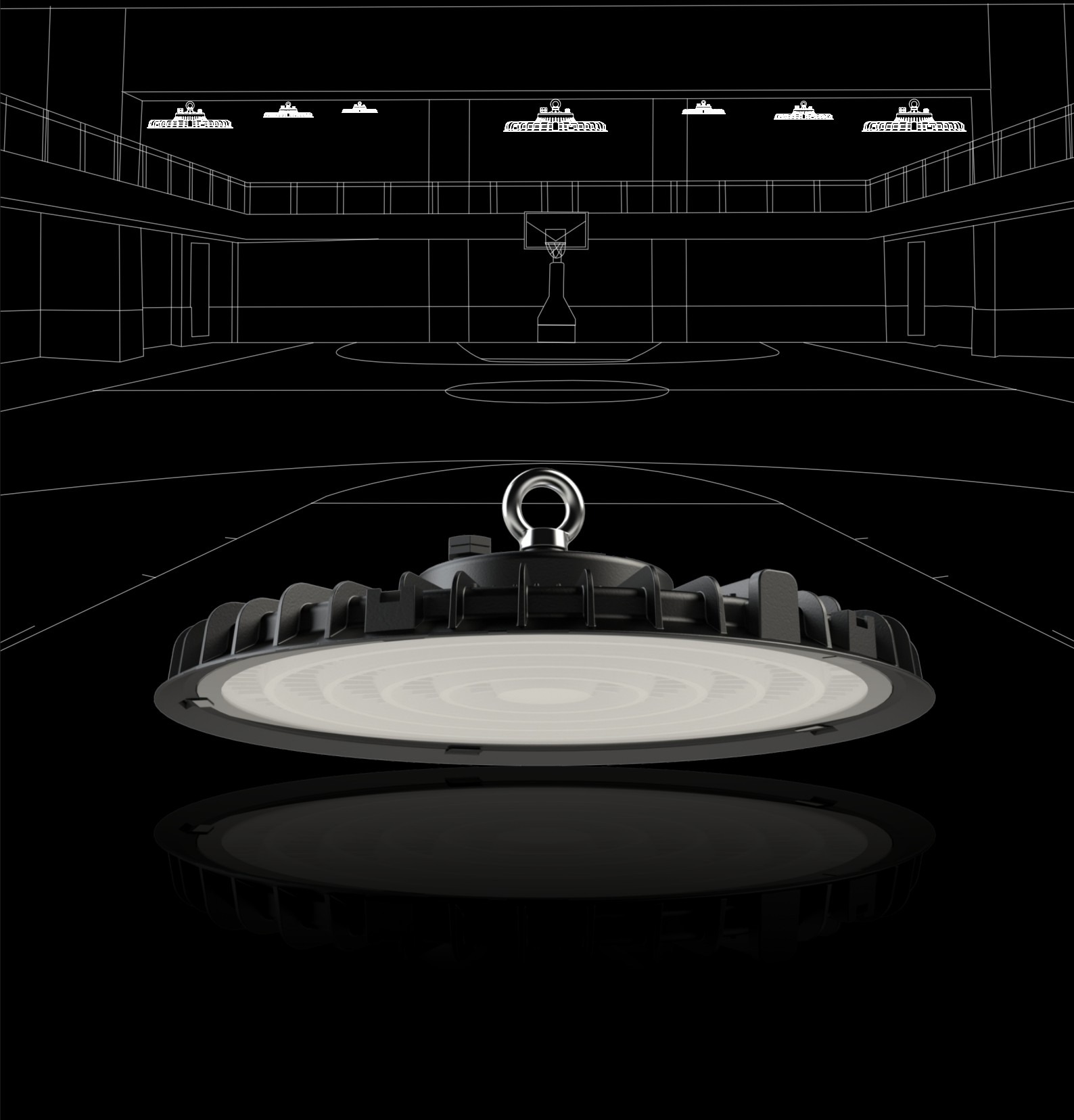


PANORAM

# LIFO HIGH BAY LIGHT

HY SERIES

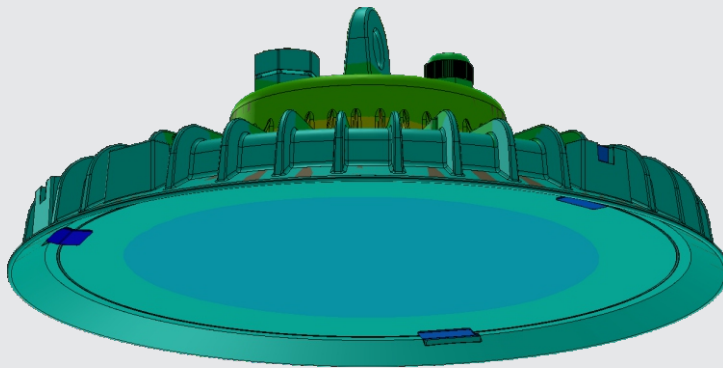


# OVERVIEW

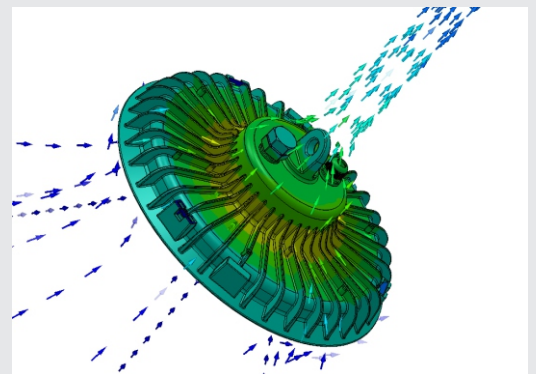


## THERMAL MANAGEMENT

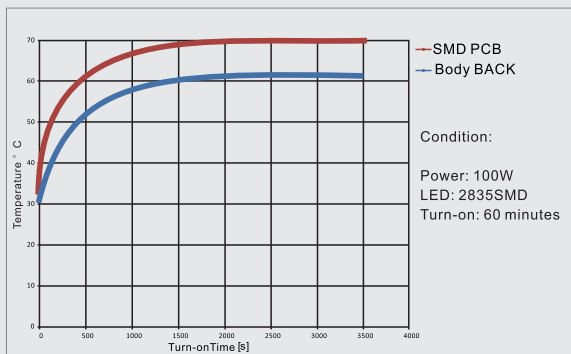
Structure is optimized by advanced FEA technology. Achieving longer lifespan at best cost-efficiency.



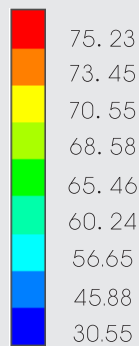
Thermal Conductivity



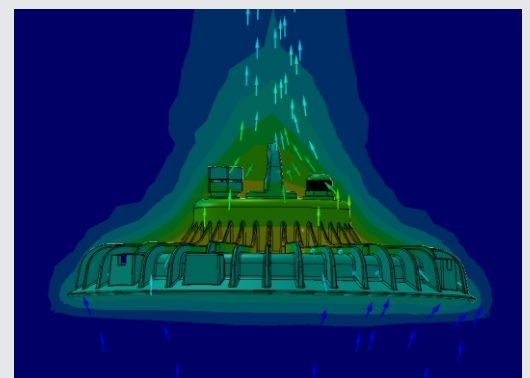
Thermal Air Convection



Temperature Rise Curve



Unit: °C



Thermal Air Flow(to environment)

**EXPLODED**



200W

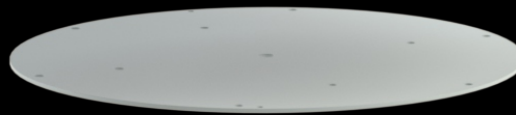


IP65 air evacuation valve, to balance pressure and temperature difference.

Integrated hanging ring



ADC12 die-casting aluminum body. Thermal efficiency up to 96W/M.K



High efficiency aluminum PCB.

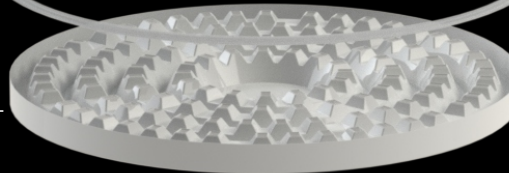
High efficiency 2835SMD Chip up to 100lm/W.



Waterproof Silica gel.



Nano reflector.



Clear glass



or



Textured glass



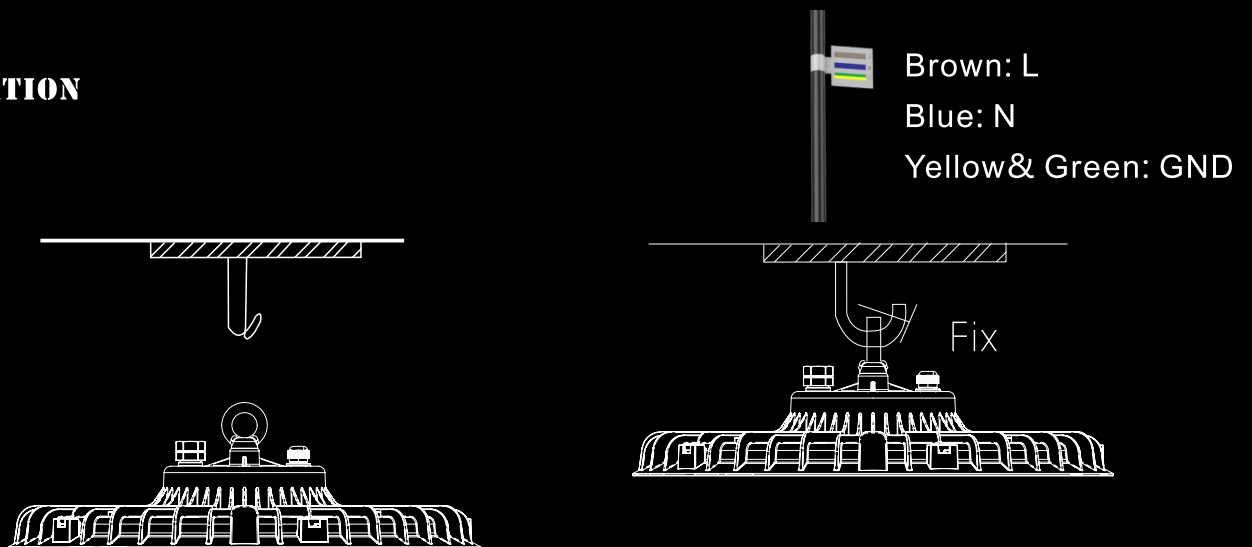
## APPLICATIONS

Suitable for warehouse, sports centers, logistic centers, supermarkets, train stations and other similar indoor and outdoor locations.



warehouse

## INSTALLATION





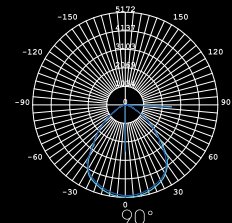
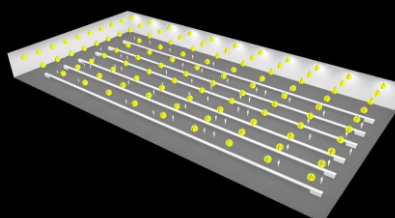
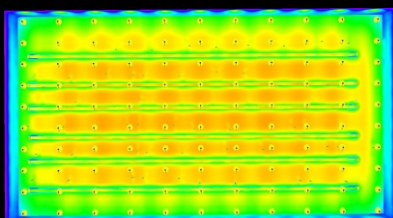
# OPTICS

Tech. Support: Tell us the room length, width, height and the usage. We have an engineer team to respond the DIALUX simulations for lights quantity calculation and effects.

.ies files are available upon request.



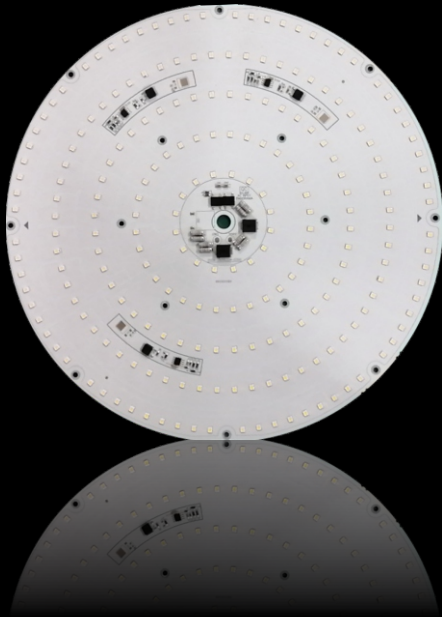
Height	Average Lux			Central Lux	Spot Diameter
	100W	150W	200W		
1.50m	1103.84lx	x1.5	x2.0	2296.78lx	283.96cm
2.00m	620.91lx			1291.94lx	378.62cm
4.00m	155.23lx			322.99lx	757.23cm
6.00m	68.99lx			143.55lx	1135.85cm
8.00m	38.81lx			80.75lx	1514.46cm



Lighting Distributions

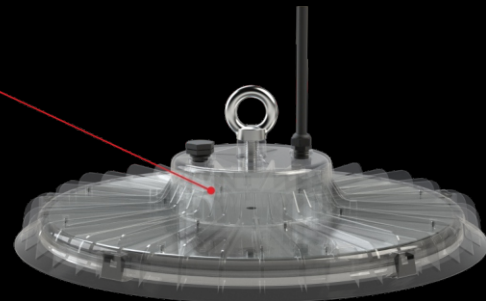
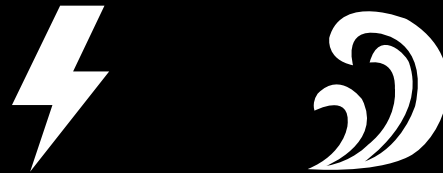
**ELECTRICAL**

DOB or Constant current driver solution.



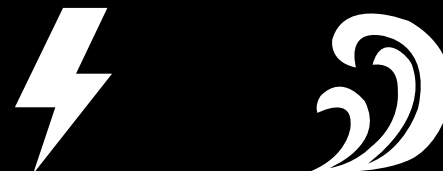
DOB Solutions

1. AC220V-277V 50/60Hz.
2. PF>0.9.
3. Comply with LVD&EMC
4. 4KV-10KV Surge protection .
5. High grade IC.
6. Efficiency>92%, more energy-saving.
7. Start time 0.75S.

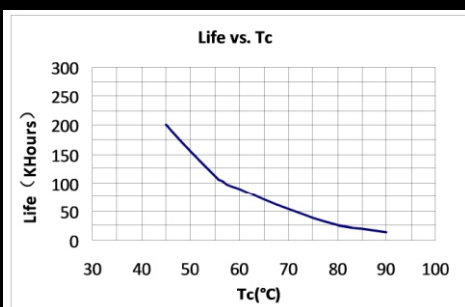


Constant Current Solution:

1. AC85-277V 50/60Hz .
2. PF>0.5.
3. Comply with LVD&EMC .
4. 4KV-10KV Surge protection .
5. Efficiency>90%.
6. Start time 0.75S.



**4KV SURGE PROTECTION**



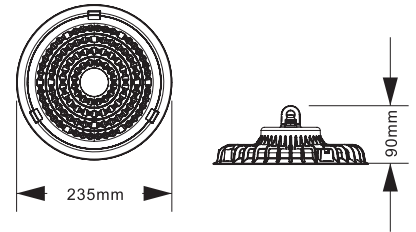
## UFO HIGH BAY LIGHT



### P-HY100-100W

LED Module: 112pcs/2835  
 LED Power: 100W±10%  
 Product Size: Φ235xH90mm  
 THD≤30% Surge:4~10kV/kA  
 Lux Efficiency: 100LM/W  
 LED Initial Flux: 10000-11000LM  
 Power Factor: >0.9/0.5  
 Voltage: AC200-277V / AC85-277V

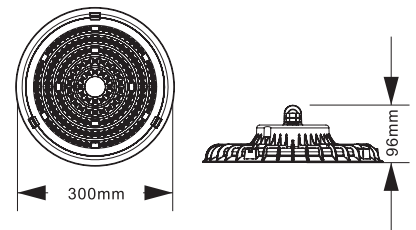
Beam Angle: 90°  
 Color Temp.: 3000K/4000K/6000K  
 Color Rendering Index: Ra>75-85  
 IP Grade:IP65 IK Grade:IK07  
 Working Temp.: -40°C ~ +55°C  
 Working Life-Span: 25000H  
 Connect Wire: Brown/Blue/Yellow  
 LED Driver: Constant Current Solution  
 & DOB Solution



### P-HY150-150W

LED Module: 168pcs/2835  
 LED Power: 150W±10%  
 Product Size: Φ300xH96mm  
 THD≤30% Surge:4~10kV/kA  
 Lux Efficiency: 100LM/W  
 LED Initial Flux: 14000-15000LM  
 Power Factor: >0.9/0.5  
 Voltage: AC200-277V / AC85-277V

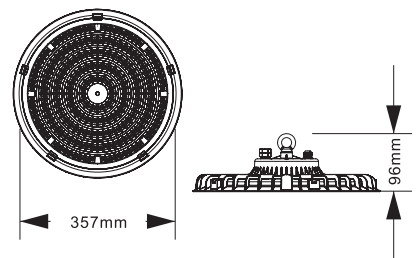
Beam Angle: 90°  
 Color Temp.: 3000K/4000K/6000K  
 Color Rendering Index: Ra>75-85  
 IP Grade:IP65 IK Grade:IK07  
 Working Temp.: -40°C ~ +55°C  
 Working Life-Span: 25000H  
 Connect Wire: Brown/Blue/Yellow  
 LED Driver: Constant Current Solution  
 & DOB Solution



### P-HY200-200W

LED Module: 224pcs/2835  
 LED Power: 200W±10%  
 Product Size: Φ357xH96mm  
 THD≤30% Surge:4~10kV/kA  
 Lux Efficiency: 100LM/W  
 LED Initial Flux: 18000-20000LM  
 Power Factor: >0.9/0.5  
 Voltage: AC200-277V / AC85-277V

Beam Angle: 90°  
 Color Temp.: 3000K/4000K/6000K  
 Color Rendering Index: Ra>75-85  
 IP Grade:IP65 IK Grade:IK07  
 Working Temp.: -40°C ~ +55°C  
 Working Life-Span: 25000H  
 Connect Wire: Brown/Blue/Yellow  
 LED Driver: Constant Current Solution  
 & DOB Solution



## PACKING

	P-HY100	P-HY150	P-HY200
Inner box size	25*9.5*25cm	31.5*10.5*31.5cm	37*10*37cm
Qty/box	1pcs	1pcs	1pcs
Qty/carton	10pcs	5pcs	5pcs
Carton size	52*50.5*27cm/0.071m <sup>3</sup>	55.5*33.5*33.5cm/0.062m <sup>3</sup>	54*38.5*38.5cm/0.064m <sup>3</sup>
Product Weight	1.2kg	1.8kg	2.3kg
Weight (N.W)	12.0kg	9.0kg	11.5 kg
Weight (G.W)	12.8kg	10.5kg	12.5kg





## Features

1. AC85-277V/200-277V 50/60Hz.
2. Lighting efficacy up to 100lm/W.
3. Famous brand 2835SMD light source.
4. PF>0.9, comply with LVD/EMC.
6. Die-casting aluminum housing. Anti-corrosion powder painting.
7. IP65 Waterproof for outdoor.
8. 2 years warranty.

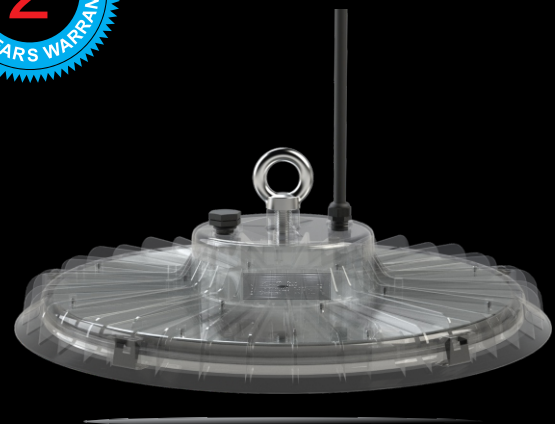


## CAUTIONS:

1. Installation must be done by professional electricians.
2. Do NOT take apart the product. It may be dangerous.
3. Do NOT stare at the light with naked eyes. It is harmful to eyes.
4. For outdoor lighting, waterproof measurements must be done to the cable terminals.

## WARRANTY:

1. All UFO High Bay Lights are warranted by the manufacturer to be free of defects in material and workmanship for 2 years.
2. Warranty becomes void if the products is modified, improperly installed or used, damaged by accident or neglect, or if any parts are improperly installed or replaced by the user,
3. During the period of warranty time, if some products of us fails during normal circumstances and applications or have any defects above defined, we shall at our own choice replace or repair the defective products at no charge. And the liability claims would NOT exceed the value of the product itself.



## PANORAMA LIGHTING CO.,LTD

E-mail: [admin@panorama-led.com](mailto:admin@panorama-led.com)

[Http://www.panorama-led.com](http://www.panorama-led.com)

Add.:No.282,ChangAn North Rd,Henglan,  
Zhongshan,Guangdong, P.R.China.



**Jane**

+86-18676275645



**Alyssa**

+86-13925326903



**Lillian**

+86-13169883399